

Shared Medical Space for Sublease

436 N Bedford Dr. Beverly Hills, CA 90210



Property Information

Space Sq Ft: Different options available depending on Subtenant's needs

Rental Rate: Negotiable

Parking: Ample Subterranean Parking

Property Highlights

- Highly Improved Shared Medical Space
- Located on Bedford Drive, Beverly Hill's Premier Medical Corridor
- Most High End Building on Bedford Drive
- Access to Private Adjacent Surgery Center Available
- Amount of Private Space and Shared Space is Negotiable
- Share Space with Top Beverly Hills Plastic Surgeon (Open to all Medical Fields)
- Shared Receptionist
- Available for Immediate Occupancy

For Additional Information, Contact:



Commercial Asset Group, Inc.
9606 Santa Monica Blvd. 2nd Floor
Beverly Hills, California 90210
T 310.275.8222 F 310.275.8223
www.cag-re.com Lic. 01876070

David Aschkenasy
Sr. Managing Director
D 310.272.7381
david@ cag-re.com
Lic. 01714442

Ryan Schimel
Director
D 310.272.7384
ryans@ cag-re.com
Lic. 01879511

These materials are based on information and content provided by others, which we believe are accurate. No guarantee, warranty or representation is made by Commercial Asset Group, Inc. or its personnel. All interested parties must independently verify accuracy and completeness. As well, any projections, assumptions, opinion, or estimates are used for example only and do not represent the current or future performance of the identified property. Your tax, financial, legal and toxic substance advisors should conduct a careful investigation of the property and its suitability for your needs, including land use limitations. The property is subject to prior lease, sale, change in price, or withdrawal from the market without notice.

Shared Medical Space for Sublease

436 N Bedford Dr. Beverly Hills, CA 90210



Private Office



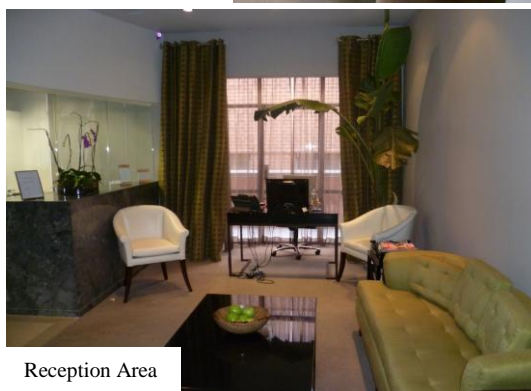
VIP Waiting Lounge



VIP Waiting Lounge



Two Reception Desks



Reception Area



Conference Room

For Additional Information, Contact:



Commercial Asset Group, Inc. :
9606 Santa Monica Blvd. 2nd Floor :
Beverly Hills, California 90210 :
T 310.275.8222 F 310.275.8223 :
www.cag-re.com Lic. 01876070 :

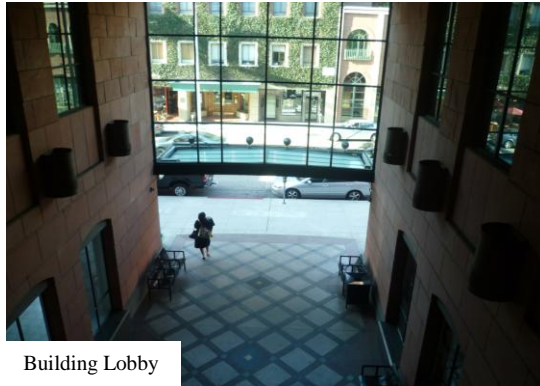
David Aschkenasy :
Sr. Managing Director :
D 310.272.7381 :
davida@cag-re.com :
Lic. 01714442 :

Ryan Schimel :
Director :
D 310.272.7384 :
ryans@cag-re.com :
Lic. 01879511 :

These materials are based on information and content provided by others, which we believe are accurate. No guarantee, warranty or representation is made by Commercial Asset Group, Inc. or its personnel. All interested parties must independently verify accuracy and completeness. As well, any projections, assumptions, opinion, or estimates are used for example only and do not represent the current or future performance of the identified property. Your tax, financial, legal and toxic substance advisors should conduct a careful investigation of the property and its suitability for your needs, including land use limitations. The property is subject to prior lease, sale, change in price, or withdrawal from the market without notice.

Shared Medical Space for Sublease

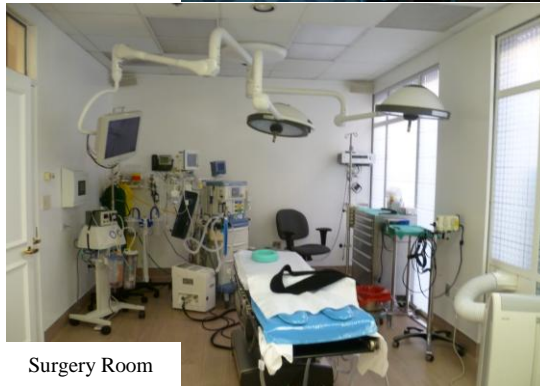
436 N Bedford Dr. Beverly Hills, CA 90210



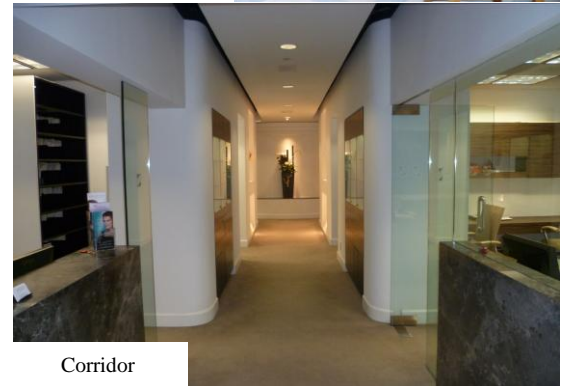
Building Lobby



Courtyard Setting



Surgery Room



Corridor



Recovery Room



Surgery Center

For Additional Information, Contact:



Commercial Asset Group, Inc. :
9606 Santa Monica Blvd. 2nd Floor :
Beverly Hills, California 90210 :
T 310.275.8222 F 310.275.8223 :
www.cag-re.com Lic. 01876070 :

David Aschkenasy :
Sr. Managing Director :
D 310.272.7381 :
david@ cag-re.com :
Lic. 01714442 :

Ryan Schimel :
Director :
D 310.272.7384 :
ryans@ cag-re.com :
Lic. 01879511 :

These materials are based on information and content provided by others, which we believe are accurate. No guarantee, warranty or representation is made by Commercial Asset Group, Inc. or its personnel. All interested parties must independently verify accuracy and completeness. As well, any projections, assumptions, opinion, or estimates are used for example only and do not represent the current or future performance of the identified property. Your tax, financial, legal and toxic substance advisors should conduct a careful investigation of the property and its suitability for your needs, including land use limitations. The property is subject to prior lease, sale, change in price, or withdrawal from the market without notice.

Shared Medical Space for Sublease

436 N Bedford Dr. Beverly Hills, CA 90210



For Additional Information, Contact:



Commercial Asset Group, Inc. :
9606 Santa Monica Blvd. 2nd Floor :
Beverly Hills, California 90210 :
T 310.275.8222 F 310.275.8223 :
www.cag-re.com Lic. 01876070 :

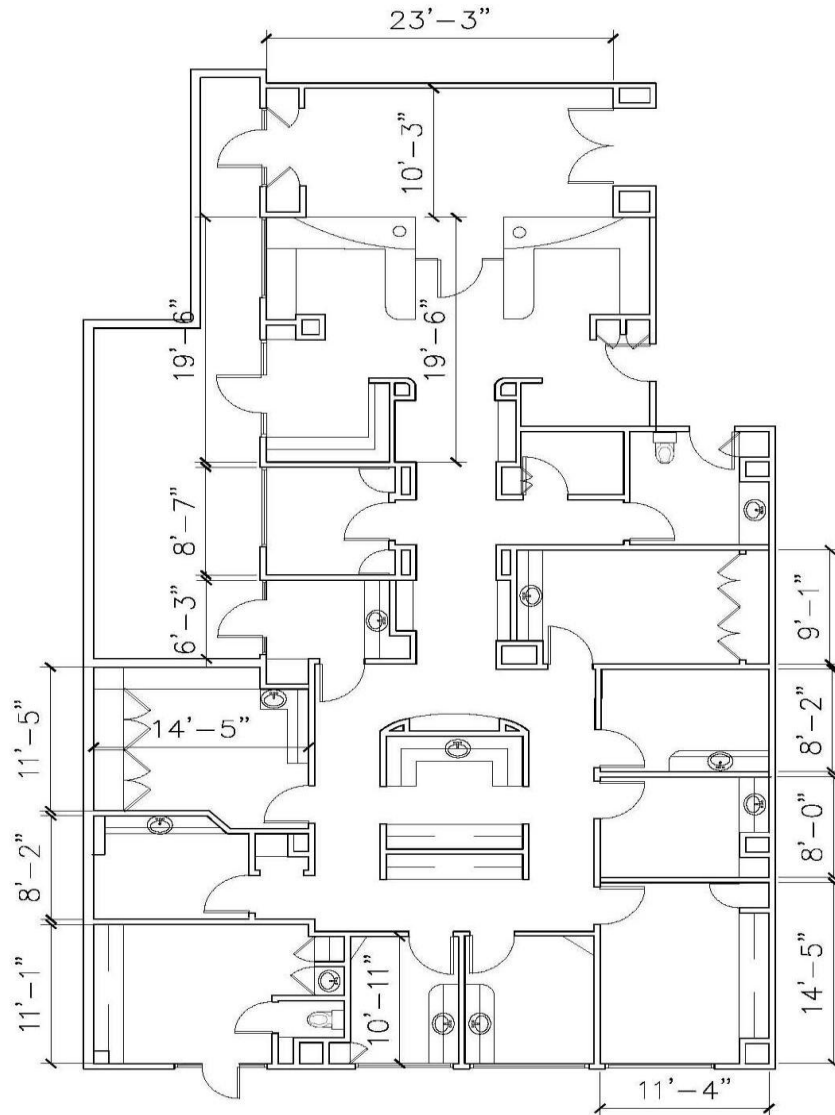
David Aschkenasy :
Sr. Managing Director :
D 310.272.7381 :
davida@cag-re.com :
Lic. 01714442 :

Ryan Schimel :
Director :
D 310.272.7384 :
ryans@cag-re.com :
Lic. 01879511 :

These materials are based on information and content provided by others, which we believe are accurate. No guarantee, warranty or representation is made by Commercial Asset Group, Inc. or its personnel. All interested parties must independently verify accuracy and completeness. As well, any projections, assumptions, opinion, or estimates are used for example only and do not represent the current or future performance of the identified property. Your tax, financial, legal and toxic substance advisors should conduct a careful investigation of the property and its suitability for your needs, including land use limitations. The property is subject to prior lease, sale, change in price, or withdrawal from the market without notice.

Shared Medical Space for Sublease

436 N Bedford Dr. Beverly Hills, CA 90210



For Additional Information, Contact:



Commercial Asset Group, Inc.
9606 Santa Monica Blvd. 2nd Floor
Beverly Hills, California 90210
T 310.275.8222 F 310.275.8223
www.cag-re.com Lic. 01876070

David Aschkenasy
Sr. Managing Director
D 310.272.7381
david@ag-re.com
Lic. 01714442

Ryan Schimel
Director
D 310.272.7384
ryans@cag-re.com
Lic. 01879511

These materials are based on information and content provided by others, which we believe are accurate. No guarantee, warranty or representation is made by Commercial Asset Group, Inc. or its personnel. All interested parties must independently verify accuracy and completeness. As well, any projections, assumptions, opinion, or estimates are used for example only and do not represent the current or future performance of the identified property. Your tax, financial, legal and toxic substance advisors should conduct a careful investigation of the property and its suitability for your needs, including land use limitations. The property is subject to prior lease, sale, change in price, or withdrawal from the market without notice.