

Medical Condo for Lease

12732 Washington Blvd. #B Los Angeles, CA 90066



Property Information

Building SF: +/- 1,917 SF

Rental Rate: \$ 1.95 PSF
(Modified Gross)

Parking: **Four (4) Designated Spaces**
Six (6) Unassigned Spaces Available

Property Highlights

- Prime Corner Location (Located near the Intersection of Washington Place and Washington Blvd.)
- Currently a Chiropractic Office
- Space Consists of Nine Exam Rooms, Two Restrooms, Reception Desk and Waiting Room, Kitchen, and Storage
- Recently Remodeled
- Space is in Move-In Condition
- Available for Immediate Occupancy

For Additional Information, Contact:



Commercial Asset Group, Inc.
9606 Santa Monica Blvd. 2nd Floor
Beverly Hills, California 90210
T 310.275.8222 F 310.275.8223
www.cag-re.com Lic. 01876070

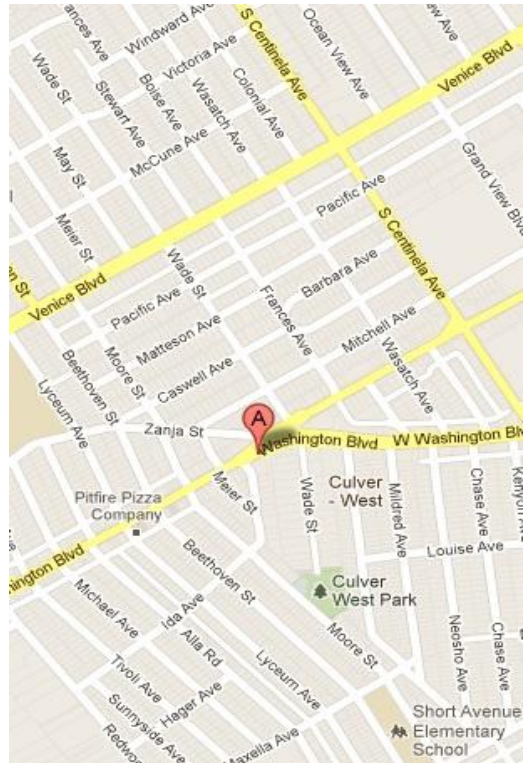
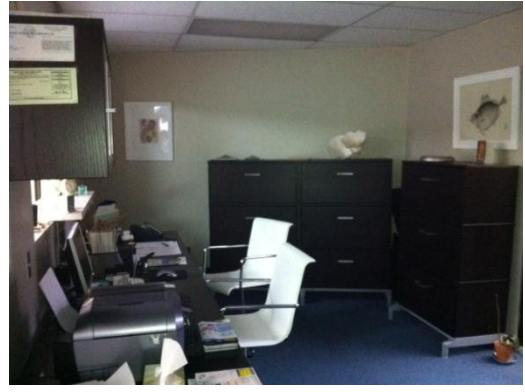
David J. Ickovics
Principal
D 310.272.7380
dji@cag-re.com
Lic. 01315424

Ryan Schimel
Associate
D 310.272.7384
ryans@cag-re.com
Lic. 01879511

These materials are based on information and content provided by others, which we believe are accurate. No guarantee, warranty or representation is made by Commercial Asset Group, Inc. or its personnel. All interested parties must independently verify accuracy and completeness. As well, any projections, assumptions, opinion, or estimates are used for example only and do not represent the current or future performance of the identified property. Your tax, financial, legal and toxic substance advisors should conduct a careful investigation of the property and its suitability for your needs, including land use limitations. The property is subject to prior lease, sale, change in price, or withdrawal from the market without notice.

Medical Condo for Lease

12732 Washington Blvd. #B Los Angeles, CA 90066



For Additional Information, Contact:



Commercial Asset Group, Inc. :
9606 Santa Monica Blvd. 2nd Floor :
Beverly Hills, California 90210 :
T 310.275.8222 F 310.275.8223 :
www.cag-re.com Lic. 01876070 :

David Ickovics :
Principal :
D 310.272.7380 :
dji@cag-re.com :
Lic. 01315424 :

Ryan Schimel :
Associate :
D 310.275.8222 :
ryans@cag-re.com :
Lic. 01879511 :